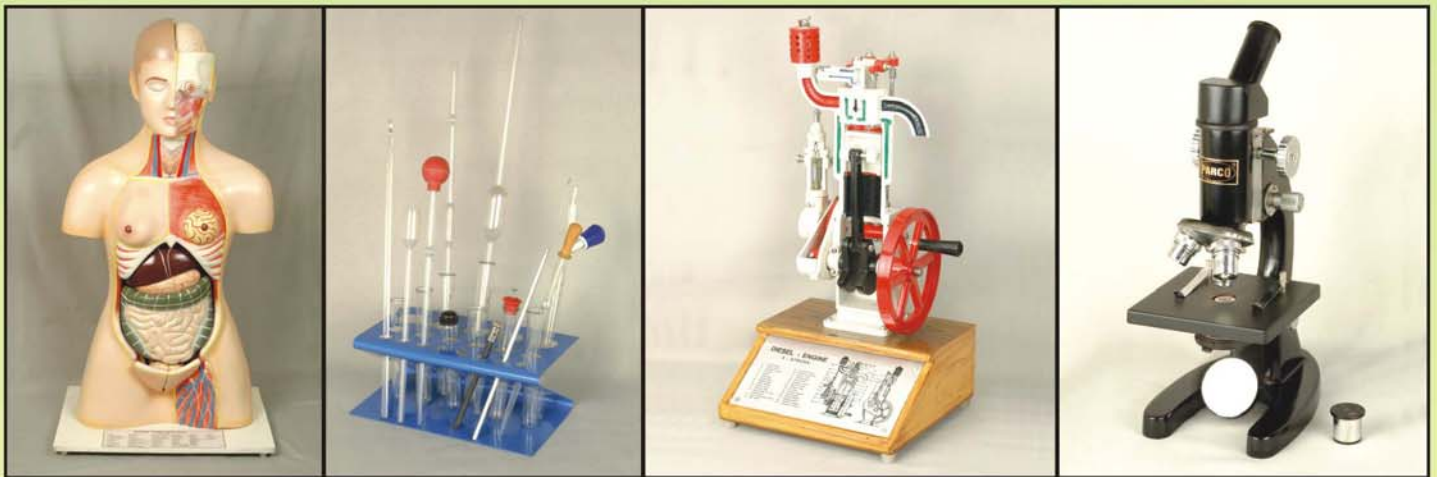




Products Catalogue



**Educational Scientific Instruments
&
Laboratory Equipments**

AN ISO 9001:2000 CERTIFIED COMPANY

TO OUR VALUED CUSTOMERS

Dear Friends,

We are grateful to you for patronising & promoting the sale of our products in your area.

We have been serving our Valued Customers for the past over 40 years by offering Educational Scientific Instruments & Laboratory Equipments required in Physics, Chemistry & Biology Laboratories. We are committed to manufacture & supply **High Quality** products .

Quality is of paramount importance to us & our products conform to international standard. Our trade mark '**PARCO**' has created a niche both in the domestic as well as world market. This we have achieved through constant monitoring of customer Feedback.

We are an **ISO 9001 : 2000 CERTIFIED COMPANY.**

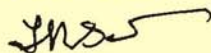
We are repeat Export Award Winners. We are regularly exporting to many countries including UK, USA, Singapore, Australia, European countries etc.

This product range brochure will give you an idea about the range of products we are dealing in. We can supply many other items although not listed herein.

Customers satisfaction is of prime importance to us. We solicit your valuable suggestions for further improvement. We believe even the best can be improved.

With Regards,

for **SALOOJA BROTHERS PVT. LTD.**



Director



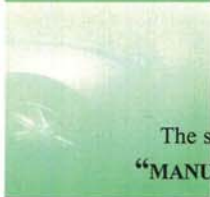
Certificate of Registration



This certificate has been awarded to
SALOOJA BROTHERS PVT. LTD.
8/34, INDUSTRIAL AREA, KIRTI NAGAR, NEW DELHI-110 015, INDIA



in recognition of the
organization's Quality System which complies with
ISO 9001:2000



The scope of activities covered by this certificate are defined below
"MANUFACTURE & SUPPLY OF ELECTRO-MECHANICAL SCIENTIFIC
INSTRUMENTS & LABORATORY EQUIPMENTS."



Certificate Number: 19082
Date of Issue: 23-12-06 ISSUE NO.: 1
Expiry Date: 22-12-09
Issued by:


On Behalf of the
Schemes Manager

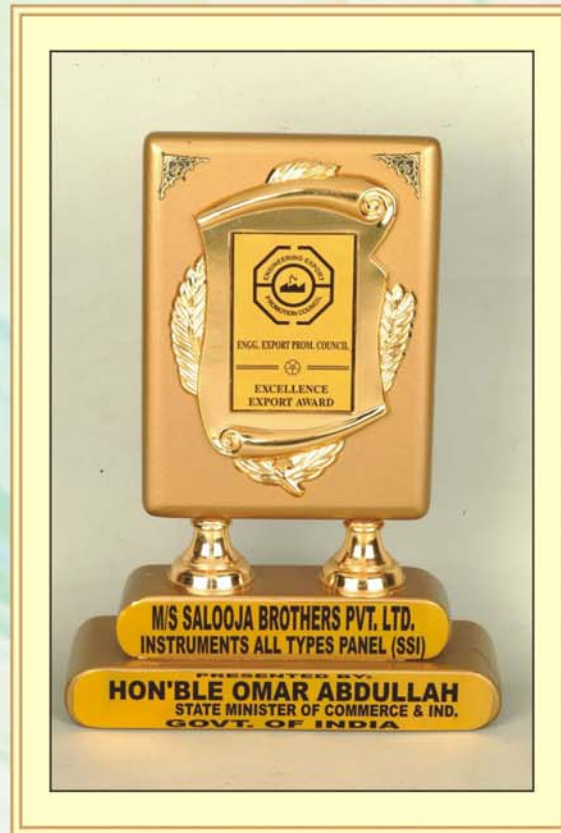
URS is a member of Registrar of Standards (Holdings) Limited a UK registered company.



Mr. T.R. Salooja Managing Director
receiving the Export Award



Mr. Ramesh Salooja Jr. Managing Director
receiving the Export Award



Mr. Ajay Salooja Director Admn. & Finance
receiving the Export Award



Mr. Pankaj Salooja, Director Exports & Production
receiving the Export Award

PHYSICS

Balances & Weights

- ❖ Physical Balances, Chemical Balances & Analytical Balances
- ❖ Physical Weights Set, Chemical Weights & Analytical Weights
- ❖ Spring Balances Newtons & Grams
- ❖ Slotted Weights and Hangers, Brass & Iron
- ❖ Hooked Weights
- ❖ Bottle Shape Weights
- ❖ Fractional Weights Set, Physical & Analytical
- ❖ Reading Telescopes
- ❖ Cathetometers

Vernier Microscopes

- ❖ Vernier Microscopes Six Position
- ❖ Travelling Microscopes Horizontal & Vertical
- ❖ Travelling Microscopes Advance Type with Transverse Movement

Measurements

- ❖ Meter Scales (Meter Rules)
- ❖ Measuring Tapes Various
- ❖ Vernier Calipers Different Types
- ❖ Micrometer Screw Gauges
- ❖ Demonstration Model Large Micrometers & Vernier Calipers
- ❖ Spherometers & Opisometers
- ❖ Demonstration Model Large Spherometer

Specific Gravity

- ❖ Cubes of different Sizes & Metals
- ❖ Cylinders of different Sizes & Metals
- ❖ Spheres of different Sizes & Metals
- ❖ Density Bottles
- ❖ Nicholson Hydrometers
- ❖ Universal Hydrometers
- ❖ U-Tube Apparatus on Stand
- ❖ Hare's Apparatus on Stand
- ❖ Combined 'U' Tube & Hare's Apparatus on Stand

Boyle's Law Apparatus & Air Pumps

- ❖ Boyle's Law Apparatus on Stand
- ❖ Charle's Law Apparatus (Jolly's Apparatus)
- ❖ Air Pump Vacuum
- ❖ Guinea & Feather Apparatus
- ❖ Magdeburg Hemisphere, Iron & Brass

Hydraulics

- ❖ Filter Pump Model
- ❖ Lift Pump Model
- ❖ Force Pump Model
- ❖ Bramah Press Model
- ❖ Equilibrium Tubes (Water Level Apparatus)
- ❖ Capillary Apparatus
- ❖ Bernoulli Tube
- ❖ Venturi Tubes
- ❖ Hook's Law Apparatus



PHYSICS

- ❖ Surface Tension Apparatus
- ❖ Viscosity Apparatus

Meteorology

- ❖ Fortin's Barometers (Mercurial Barometers)
- ❖ Barometer Cases Wooden
- ❖ Barometer Tubes
- ❖ Aneroid Barometers Wall Type
- ❖ Aneroid Barometer, Demonstration Model

Mechanics

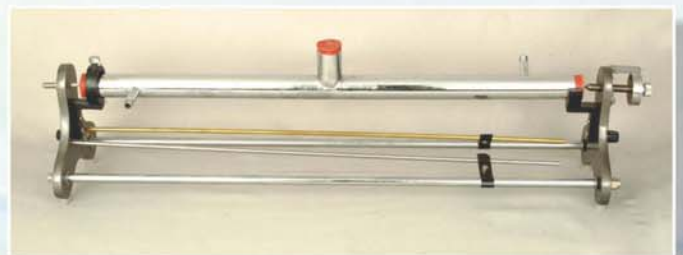
- ❖ Lever Simple Form
- ❖ Maxwell's Needle
- ❖ Pulleys Plastic 50 mm Various
- ❖ Pulleys Aluminium 50 mm Various
- ❖ Pulley Board Mounting
- ❖ Pulley Bench Mounting
- ❖ Pulley on Rod
- ❖ Differential Pulley
- ❖ Compound Pendulum
- ❖ Fly Wheel with Ball Bearing
- ❖ Wheel & Axle
- ❖ Stop Clocks (Seconds Timer)
- ❖ Parallelogram of Forces Apparatus
- ❖ Force Table
- ❖ Young Modulus Apparatus Searles & Vernier Type
- ❖ Inclined Planes & Friction Boards
- ❖ Whirling Table & Accessories

Heat

- ❖ Linear Expansion Apparatus
- ❖ Ring & Ball Apparatus
- ❖ Bar & Gauge Apparatus
- ❖ Bar Breaking Apparatus
- ❖ Compound Bar (Compound Metal Strip) Brass & Iron, Copper & Iron and Brass & copper.
- ❖ Conductivity Apparatus Various
- ❖ Conductometer with Handle
- ❖ Hope's Apparatus & Hypsometer
- ❖ Ventilation Apparatus
- ❖ Pyrometer
- ❖ Convection Tube 200 x 150 mm
- ❖ Leslie's Cubes
- ❖ Radiometer Crookes
- ❖ Constant Level Tank
- ❖ Constant Volume Air Thermometer
- ❖ Constant Pressure Air Thermometer
- ❖ Calorimeters various Copper & Aluminium
- ❖ Calorimeter with Lid
- ❖ Joule's Calorimeters
- ❖ Steam Heaters & Steam Boilers
- ❖ Mechanical Equivalent of Heat Apparatus
- ❖ Continuous Flow Calorimeter, Callandar & Barne's

Thermometers

- ❖ Thermometer Celsius (Centigrade) Mercury



PHYSICS

- ❖ Thermometer Fahrenheit Mercury
- ❖ Thermometer Celsius, Red Spirit filled
- ❖ Thermometer Fahrenheit Red Spirit filled
- ❖ Thermometer Precision (Celsius) Centigrade
- ❖ Clinical Thermometers
- ❖ Maximum & Minimum Thermometers
- ❖ Wet & Dry Thermometers
- ❖ Wall Thermometers

Internal Combustion and Steam Engine Models

- ❖ Petrol Engine Two Stroke
- ❖ Petrol Engine Four Stroke
- ❖ Diesel Engine Two Stroke
- ❖ Diesel Engine Four Stroke
- ❖ Gas Engine Demonstration Model
- ❖ Steam Engine Horizontal & Vertical
- ❖ Steam Engine Sectional Demonstration
- ❖ Steam Engine Factory Model Demonstration

Light

- ❖ Optical Benches Various & Accessories (Wooden Base)
- ❖ Optical Benches Various & Accessories (Metal Base)
- ❖ Optical Benches Various & Accessories Metal Rods Type

Optical Bench Accessories

- ❖ Lens Holder Wooden
- ❖ Universal Lens Holder Metallic
- ❖ Optical Screen
- ❖ Pin Hole Camera
- ❖ Adjustable Slit

Glass Cubes & Prisms

- ❖ Cube Glass Hollow
- ❖ Prism Glass Equilateral & Right Angled
- ❖ Prism Glass Hollow Equilateral
- ❖ Biprism Fresnel, Crown Glass
- ❖ Optical Worked Glass Prisms
- ❖ Crown Glass
- ❖ Light Flint Glass
- ❖ Dense Flint Glass
- ❖ Extra Dense Flint Glass
- ❖ Acrylic Prisms, Cubes, Blocks etc.

Mirrors & Lenses

- ❖ Mirrors Concave or Convex Optically worked
- ❖ Plain Mirror Strips
- ❖ Holder for Mirror Strips (Wooden Cube)
- ❖ Lloyds Mirrors
- ❖ Lenses Biconvex or Biconcave
- ❖ Plano Convex or Plano Concave Lenses
- ❖ Lenses Demonstration Set of 6.

Magnifiers

- ❖ Magnifiers (Reading Glass) With Handle.
- ❖ Magnifier Folding Pocket Type Mounted in Plastic Case
- ❖ Magnifier Pocket Type, Loupe 10x Magnification
- ❖ Tripod Magnifier



PHYSICS

Glass Slabs (Blocks) Etc.

- ❖ Glass Slab Rectangular (Sheet Glass)
- ❖ Glass Slab (Block) Rect. Hollow with Stopper
- ❖ Semi Circular & Circular Glass Blocks
- ❖ Acrylic Plastic Blocks
- ❖ Hartle's Optical Disc
- ❖ Ray Box & Ray Optic Kit
- ❖ Light Box with Accessories
- ❖ Newton Ring Apparatus
- ❖ Newton Colour Disc on Stand
- ❖ Newton Ring microscope

Spectrometers & Accessories

- ❖ Spectrometers Student Economical
- ❖ Intermediate Spectrometer
- ❖ Advanced Spectrometer
- ❖ Mercury Vapour Lamp
- ❖ Sodium Vapour Lamp
- ❖ Diffraction Gratings
- ❖ Demonstration Diffraction Grating Set of 3
- ❖ Eye Piece Graticules
- ❖ Stage Micrometer Graticules
- ❖ Direct Vision Spectroscope
- ❖ Film Strip Cum Slide Projector

Polarization

- ❖ Polarimeter Student
- ❖ Polarimeter Tube 100 or 200 mm
- ❖ Polaroid Disc in Metal Frame

Sound

- ❖ Wave Motion Apparatus
- ❖ Bell in Vacuum
- ❖ Ripple Tank
- ❖ Sonometer & Accessories
- ❖ Resonance Apparatus

Tuning Forks

- ❖ Tuning Fork Welch Type Chromium Plated Steel
- ❖ Tuning Fork Ragg's Type Chromium Plated Steel
- ❖ Resonance Boxes
- ❖ Hammer Wooden for Tuning Fork
- ❖ Pad Rubber for Striking
- ❖ Electrically Maintained Tuning Fork
- ❖ Melde's Apparatus
- ❖ Stroboscope
- ❖ Kundt's Tube Apparatus

Magnetism

- ❖ Horse shoe Magnets Cobalt Steel
- ❖ Bar Magnets Alinco & Cobalt Steel
- ❖ Cylindrical Magnets Alinco
- ❖ Ceramic Magnets (Bar & Ring)
- ❖ Disc Magnets
- ❖ Electromagnets U Form
- ❖ Magnetic Needle & Stands
- ❖ Plotting Compasses & Magnetic Compass



PHYSICS

- ❖ Compass Box (Magnetometers)
- ❖ Deflection Magnetometers
- ❖ Lifting Magnets
- ❖ Solenoid or Helix
- ❖ Oersted's Apparatus
- ❖ Barlow's Wheel
- ❖ Induced Current Apparatus

Frictional Electricity

- ❖ Friction Rod Glass
- ❖ Friction Rod Ebonite
- ❖ Friction Rod Half Glass, Half Brass
- ❖ Friction Rod Half Ebonite, Half Brass
- ❖ Friction Rod Half Wood, Half Brass
- ❖ Flannel Rubber - Silk Rubber
- ❖ Leyden Jar
- ❖ Electrophorus
- ❖ Electroscope Gold Leaf
- ❖ Conductors, Sphere, Cylinder & Cone on Stand
- ❖ Electroscope Pith Ball
- ❖ Proof Plane
- ❖ Ice Pails Faraday's Set
- ❖ Van de Graaf Generator

Current Electricity & Primary Cell

- ❖ Simple Voltic Cell
- ❖ Zinc, Copper & Carbon plates
- ❖ Daniel Cell
- ❖ Leclanche Cell
- ❖ Porous Pots Empty & Charged
- ❖ Zinc Rods
- ❖ Electrodes

Accumulators & Batteries (Storage)

- ❖ Accumulators Mass Type
- ❖ Accumulators Multiplate Type
- ❖ Battery Hydrometers
- ❖ Battery Clips - Crocodile Clips
- ❖ Battery Eliminators
- ❖ Battery Chargers & Power Supply

Transformers

- ❖ Transformers Stepdown Mounted on Board
- ❖ Transformer Demonstration
- ❖ Low Voltage Power Supply Units

Insulated & Bare Wires

- ❖ Copper Wire bare Wound on Reels
- ❖ Copper Wire D.C.C. Wound on Reels
- ❖ Eureka Wire (Constantan) Wound on Reels
- ❖ Nichrome Wire Wound on Reels

Electric Bells & Galvanoscopes

- ❖ Electric Bells
- ❖ Electric Bell Demonstration
- ❖ Galvanoscope Simple Form



PHYSICS

Tangent Galvanometers & Accessories

- ❖ Tangent Galvanometer
- ❖ Tangent Galvanometer Holmetz Pattern
- ❖ Compass Box (Magnetometer)
- ❖ Tangent Galvanometer Stewart's and Gee's Pattern.

Ammeters, Voltmeters and Galvanometers

- ❖ Ammeter Moving Iron
- ❖ Ammeter Moving Coil (MO-65, MR-80 & MR-100)
- ❖ Milliammeter Moving Iron
- ❖ Milliammeter Moving Coil (MO-65, MR-80 & MR-100)
- ❖ Microammeter Moving Coil (MO-65 & MR-100)
- ❖ Voltmeter Moving Coil (MO-65, MR-80 & MR-100)
- ❖ Millivoltmeter Moving Coil (MO-65 & MR-100)
- ❖ Galvanometers
- ❖ Voltmeter Moving Iron
- ❖ Ammeter, Voltmeter & Galvanometers Demonstration Models (Moving Coil)
- ❖ Ammeter, Voltmeter & Galvanometers Demonstration Models Giant Type

Post Office Boxes

- ❖ Post Office Box Plug Type
- ❖ Post Office Box (Wheatstone Bridge) Dial Type

Resistance Boxes

- ❖ Resistance Boxes Plug Type
- ❖ Resistance Boxes, Fractional Plug Type
- ❖ Resistance Box, Dial Type

Resistance Coils

- ❖ Resistance Coil Bakelite Case
- ❖ Resistance Coil Plastic Transparent
- ❖ Resistance Coil in Series & Parallel

Bridges

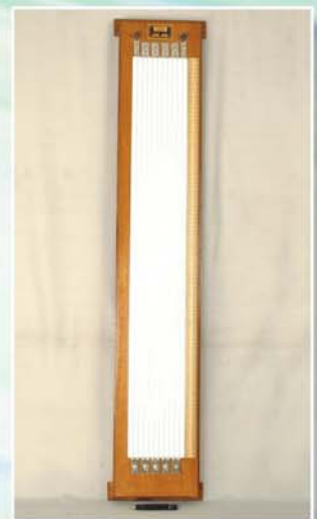
- ❖ Platinum Resistance Thermometer
- ❖ Kelvin Double Bridge Dial Type
- ❖ Kohlrausch Conductivity Bridge
- ❖ Callendar and Griffiths Bridge

Rheostats

- ❖ Single Tube Bakelite Feet
- ❖ Single Tube Metal Feet
- ❖ Double Tube
- ❖ Potentiometer 10 Wires
- ❖ Potentiometer Dial Type

Wheatstone Bridges

- ❖ Meter Bridge (Wheatstone) 1 Meter
- ❖ Meter Bridge (Wheatstone) Half meter
- ❖ Pencil Jockey
- ❖ Ohm's Law Apparatus



PHYSICS

Induction Coils

- ❖ Induction Coil Box Form
- ❖ Vibrator Electrical

Dynamos, Motors & Accessories

- ❖ Lamp Holder M.E.S.
- ❖ Dynamo With Wheel
- ❖ Miniature Motor Model
- ❖ Motor Demonstration Model
- ❖ Motor-Cum-Generator Unit

Plug Keys & Switches Etc.

- ❖ Plug Keys
- ❖ Plug Key Reversing (Commutator)
- ❖ Reversing Key (Reversing Switch)
- ❖ Contact Key (Tapping)
- ❖ Thermocouple
- ❖ Thermopile

Voltmeters & Accessories

- ❖ Voltmeter Cum Form
- ❖ Voltmeter Hoffman
- ❖ Metal Stand for Voltmeter
- ❖ Platinum Electrodes
- ❖ Carbon Electrodes
- ❖ Copper Voltmeter
- ❖ Spectrum Tubes Various Gases

Vacuum Apparatus-Geissler Tubes

- ❖ Geissler Tubes set
- ❖ Phosphorescent Mercury tube
- ❖ Friction Vacuum tube

Spectrum Discharge Tubes:

- ❖ Ammonia, Argon, Carbon Dioxide, Helium, Hydrogen, Krypton
- ❖ Mercury Vapour, Neon, Nitrogen, Oxygen, Sulphur, Water vapours

Crookes Tubes

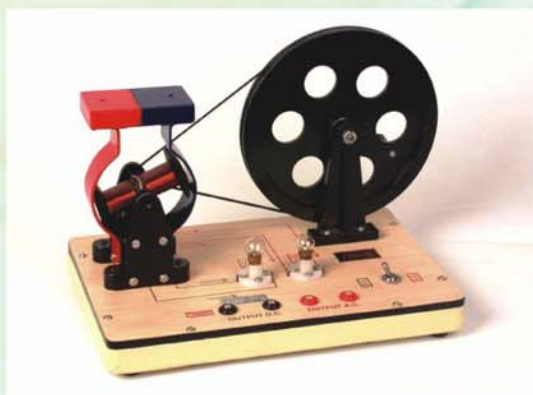
- ❖ Shadow and Stencil Tube
- ❖ Vacuum Tube with Luminous mineral

Deflection of Cathode Rays

- ❖ Deflection tube with fluorescent screen
- ❖ Cathode Ray Tube, Braun's
- ❖ Cathode Ray Tube, Thompson's

X-Ray Tube and Accessories

- ❖ X-Ray tube
- ❖ Fluorescent Screen
- ❖ Cylindrical Discharge Tube



PRODUCTS BY AN ISO 9001:2000 CERTIFIED COMPANY

CHEMISTRY

Balances Chemical & Analytical

- ❖ Weights Set Chemical & Analytical
- ❖ Fractional Weights Set Analytical
- ❖ Thermometers Various Types
- ❖ Water Taps & Gas Taps

BURNERS VARIOUS

- ❖ Spirit Burners Aluminium & Glass
- ❖ Bunsen Burners
- ❖ Bunsen Burners with Stop Cock
- ❖ Flame Fast Bunsen Burner
- ❖ Teclu Burner
- ❖ Meker Burner
- ❖ High Temperature Burner
- ❖ Semi Micro Burner
- ❖ Water Baths Copper & Aluminium
- ❖ Ovens, Incubators & Furnaces
- ❖ Water Still (Distillation Apparatus)
- ❖ Heating Mantles
- ❖ Centrifuge Hand Driven & Electrical
- ❖ Test Sieves
- ❖ Hot Plates Magnetic Stirrers
- ❖ Chromatography (Thin Layer Chromatography Apparatus)

RETORT & TRIPOD STAND & RINGS

- ❖ Retort Stand Rectangular with Rods
- ❖ Retort Stand (Tripod) With Rods
- ❖ Tripod Stand Circular
- ❖ Tripod Stand Triangular
- ❖ Rings for Retort Stand



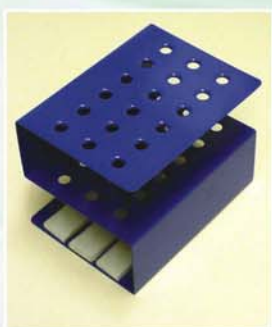
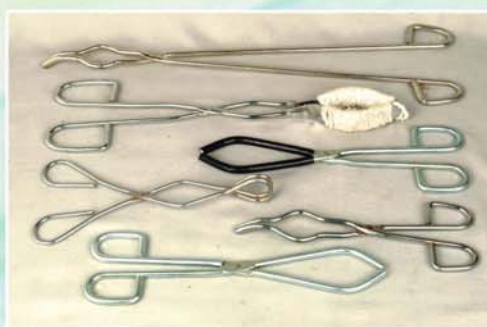
CHEMISTRY

CLAMPS & BOSS HEADS

- ❖ Burette Clamp (Holder) Fisher Type Moulded
- ❖ Burette Clamp (Holder) Die Pressed
- ❖ Retort Clamp (Extension Clamp) Cross Pattern
- ❖ Condenser Clamp
- ❖ Lab Jacks
- ❖ Retort Clamp 3 Finger
- ❖ Boss Heads Various
- ❖ Wire Gauze, Clips, Cork Borers etc.
- ❖ Cork Boring Machine
- ❖ Test Tube Holders, Crucible Tongs etc.
- ❖ Spatula various Types
- ❖ Atomic Model Set
- ❖ Watch Glasses
- ❖ Polyethylene Ware-Bottles, Beakers, Funnels, Test Tube Stand etc.etc.
- ❖ Porcelain Ware Basins, Crucibles, Mortar & Pestle etc.
- ❖ Rubber Ware stoppers, Tubing etc.
- ❖ Wooden Ware Burette / Funnel Stand, Test Tube Stand etc.

Glassware Borosilicate & Neutral

- ❖ Glass Apparatus (Table Blown) Pipettes, Burettes etc.
- ❖ Condensers & Distillation Apparatus
- ❖ Soxlet Extraction Apparatuses
- ❖ Funnel separating & Retorts



BIOLOGY

Microscopes & Accessories

- ❖ Microscopes Student All Types
- ❖ Medical & Research Microscopes
- ❖ Binocular Microscopes
- ❖ Stereo Binocular Microscopes
- ❖ Dissecting Microscopes
- ❖ Pointer Eye Piece
- ❖ Micrometer Eye Piece Disc
- ❖ Stage Micrometer
- ❖ Camera Lucida Prism Type
- ❖ Camera Lucida Mirror Type
- ❖ Double Demonstration Eye Piece
- ❖ Microscope Lamps

Microtomes & Accessories

- ❖ Slide Projector & Over Head Projector
- ❖ Film Strip Projectors
- ❖ Micro Slide Projectors

Magnifiers Various

- ❖ Magnifier (Reading Glasses)
- ❖ Magnifier Folding
- ❖ Magnifier on Stand
- ❖ Tripod Magnifier
- ❖ Dissecting Magnifier
- ❖ Micro Slides & Cover Glasses
- ❖ Micro Cavity Slides
- ❖ Embedding Boxes



BIOLOGY

- ❖ Slide Warming Tables
- ❖ Micro Slide Boxes Wooden
- ❖ Micro Slide Boxes Plastic
- ❖ Micro Slide Cabinets
- ❖ Staining Racks
- ❖ Staining Troughs
- ❖ Staining Jar Coupling
- ❖ Barnes Bottles
- ❖ Wooden Trays for Barnes Bottles

Baths, Ovens & Incubators

Dissecting Instruments & Accessories

- ❖ Inoculating Loops
- ❖ Inoculating Needles
- ❖ Utility Tongs
- ❖ Crucible Tongs
- ❖ Beaker Tongs

Test Tube Clamps Metal & Wooden

- ❖ Spatulas Stainless Steel
- ❖ Spatulas With Wooden Handles

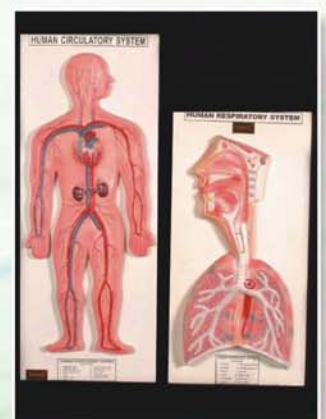
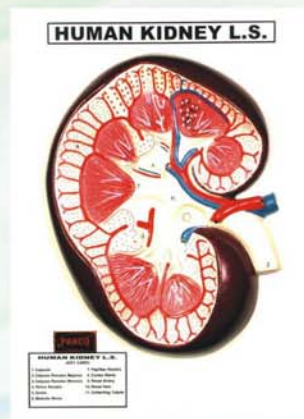
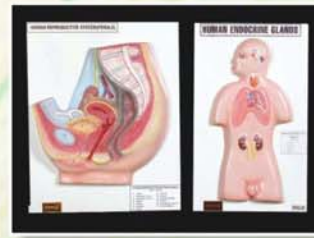
Laboratory Porcelain Ware

- ❖ Blood Cell Counters
- ❖ Dissecting Trays

Plant Physiology Apparatus

- ❖ Models Plastic & Fibre Glass
- ❖ Prepared Slides

Charts All Types



ELECTRONICS

A. DC Regulated Power Supplies (continuously Variable)

- ❖ Single Channel & Dual Channel (With Digital / Analog Meters)
- ❖ Power Supplies For Special purposes.
- ❖ AC / DC Power Supplies for students with overload & short circuit protection.

B. Function Generator & General Measuring Instruments.

- ❖ Function Generator, Sine / Square Wave Oscillators
- ❖ Rf. Signal Generator & Oscillators.
- ❖ Digital AC Milli Voltmeter, Gauss Meter,
- ❖ Digital & Analog IC Tester Power Meter
- ❖ Decade Capacitance Boxes, Inductance Boxes, Resistance Boxes

C. Battery Eliminators & Chargers

D. Electronic Lab Training Modules

- ❖ Diode, Triode, Tetrode, Pentode, Thyatron Valve Characteristics Apparatus
- ❖ Photo Cell, Solar Cell, Plank Constant Energy Band Transistor (PNP & NPN) Characteristics
- ❖ PN Junction Diode Zener Diode, Photo Diode Characteristics Apparatus
- ❖ Thermistor, UJT, Mosfet, Diac, Triac Characteristic Apparatus
- ❖ LDR, LED, Photo diode.
- ❖ Resistance in Series & Parallel, Charging & Discharging of Condenser



ELECTRONICS

- ❖ LCR Resonance, Impedance Apparatus, Ripple Factor
- ❖ Half Wave, Full Wave, Bridge Rectifier, Voltage Regulation
- ❖ e/m Apparatus, Network Theorem using IC317 (Zener Diode & Theorem) verification (Superposition, Norton's, Thevenin's Maximum Power
- ❖ Amplifiers IFT Transistor (CB, CC & CE Mode), Audio Power Two Stage RC Coupled Amplifier.
- ❖ Operational Amplifier, Multi Vibration & Oscillator

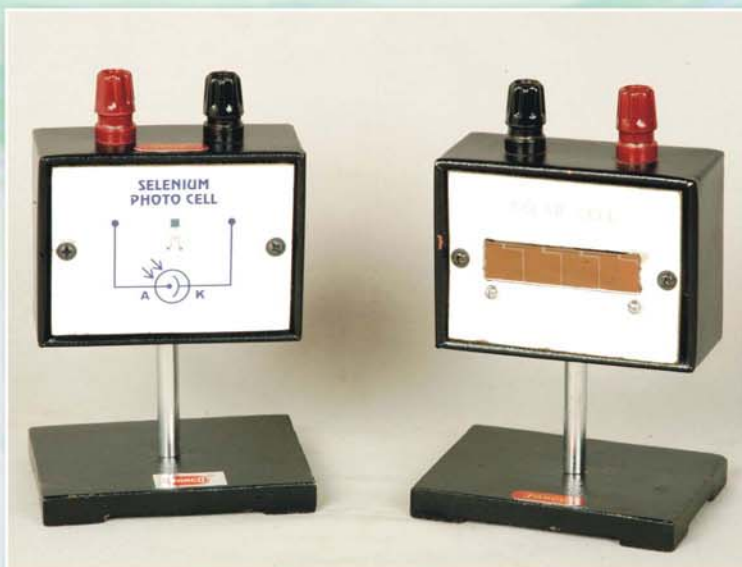
E. DIGITAL Electronic LAB Training Modules

- ❖ RTL Logic Gates, Study of Various Flip Flops (RS, D, JK & T), 4 Bit Ripple Counter & Shift Registers, Excorder & Decoder Circuitss.
- ❖ 4 to 1 line Multiplexer & Demultiplexer, Analog to Digital/ Digital to Analog Converters

F. Micro Processor & Micro Controller Lab.

- ❖ 8031 Micro Controller & 8085 Micro Processor & 8086 Training Kit.
- ❖ Interface Cords Logic Controller, IC Tester, Stepper Motor, LCD Display,
- ❖ Temperature Measurement, Relay & opt Coupler, Thumb Wheel
- ❖ Study Cards 8212 Memory Decoder Card, 6264 RAM Study Card etc.

G. Oscilloscopes, Audio Frequency Generators etc.



GEOGRAPHY

Maps Political or Physical Coloured

- ❖ Maps Indian States
- ❖ Maps Foreign Countries
- ❖ Special PVC Roll Up Charts
- ❖ Roll Up Black Boards

Globes

Geographical Apparatus

- ❖ Solar System
- ❖ Standard Time Indicator
- ❖ Solar & Lunar Eclipse
- ❖ Universal Sun Dial
- ❖ Phases of Moon
- ❖ Day & Night Apparatus
- ❖ Seasons Appts. (Set of 4 Globes)
- ❖ Apparent Path of the Sun
- ❖ Theodolite Model

Students Planetarium

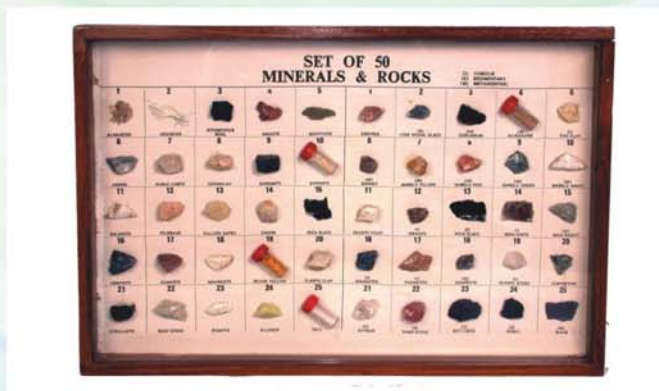
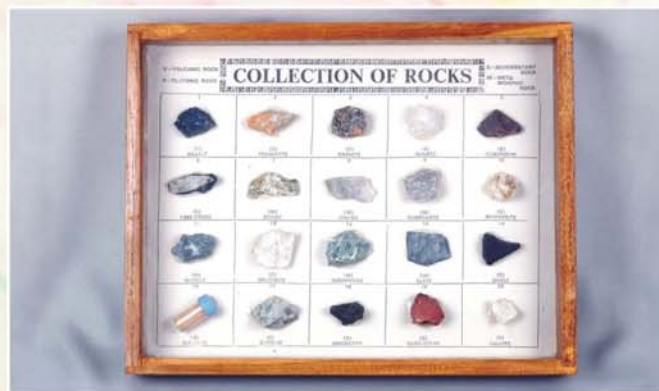
- ❖ Rain Gauge Symon's
- ❖ Wind Vane Apparatus
- ❖ Altimeter

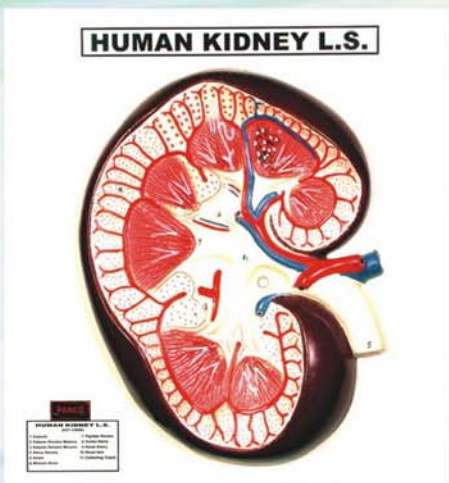
Stop Watches

- ❖ Aneroid Barometers
- ❖ Hair Hygrometer

Thermometers Centigrade & Fahrenheit

- ❖ Max & Min Thermometers
- ❖ Wet & Dry Bulb Thermometers
- ❖ Wall Thermometers
- ❖ Levelling Instruments
- ❖ Drawing Instruments
- ❖ Drawing Models







SALOOJA BROTHERS PRIVATE LIMITED

FACTORY : 8/34, Industrial Area, Kirti Nagar,
New Delhi-110015 (India)

Phones : 91-11-25927475, 41424052

REGD. OFFICE : 175-E, Kamla Nagar,
Delhi-110007 (India)

Phones : 32949652, 32949603

Fax : 91-11-45417300 **E-mails :** salooja@vsnl.com, salooja@airtelbroadband.in