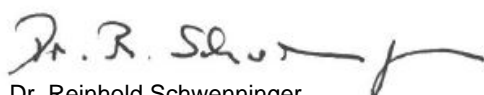


Certificate of Analysis

Product Name: 2,4,5-T
PESTANAL™
Product Number: 45667
Batch Number: BCCK5327
CAS Number: 93-76-5
Formula: $\text{Cl}_3\text{C}_6\text{H}_2\text{OCH}_2\text{CO}_2\text{H}$
Formula Weight: 255.48
Expiration Date: MAY 2028
Quality Release Date: 04 JUL 2023

TEST	SPECIFICATION	RESULT
APPEARANCE (COLOR)	WHITE TO OFF WHITE	WHITE
APPEARANCE (FORM)	POWDER OR CRYSTALS	POWDER
PURITY (HPLC AREA %)	≥ 98.0 %	98.1 %
MELTING POINT	155 - 160 C	156 C
WATER	≤ 1.0 %	0.2 %
PROTON NMR SPECTRUM	CONFORMS TO STRUCTURE	CONFORMS



Dr. Reinhold Schwenninger

Quality Assurance

Buchs, Switzerland

Sigma-Aldrich warrants that at the time of the quality release or subsequent retest date this product conformed to the information contained in this publication. The current specification sheet may be available at Sigma-Aldrich.com. For further inquiries, please contact Technical Service. Purchaser must determine the suitability of the product for its particular use. See reverse side of invoice or packing slip for additional terms and conditions of sale.

The vibrant M and Sigma-Aldrich are trademarks of Merck KGaA, Darmstadt, Germany or its affiliates. Detailed information on trademarks is available via publicly accessible resources.
© 2018 Merck KGaA, Darmstadt, Germany and/or its affiliates. All Rights Reserved.

The life science business of Merck KGaA, Darmstadt, Germany operates as MilliporeSigma in the US and Canada.



Vanquish™ Flex UHPLC

Pump : VF-P20-A
Autosampler: VF-A10-A
Detector: VF-D11-A
Column: Supelco Ascentis Express C18, 2.7 µm
Column Dim.: 50 x 2.1 mm
Mobile Phase:
 %A : ACN
 %B : H3PO4 0.01M
 %C : %C
 %D : %D
Gradient : see Figure 1
Sample Prep.: 0.2 mg sample in 1 ml methanol

Injection Time: 07.06.23 10:47
Processed By: murthale
Vial Number: B:A5
Column S/N: -
Sample Type: Unknown
Injection Volume: 1.0 µl
Flow: 1.00 ml/min
Column Temp. (°C): 35.00
Run Time: 6.00 min

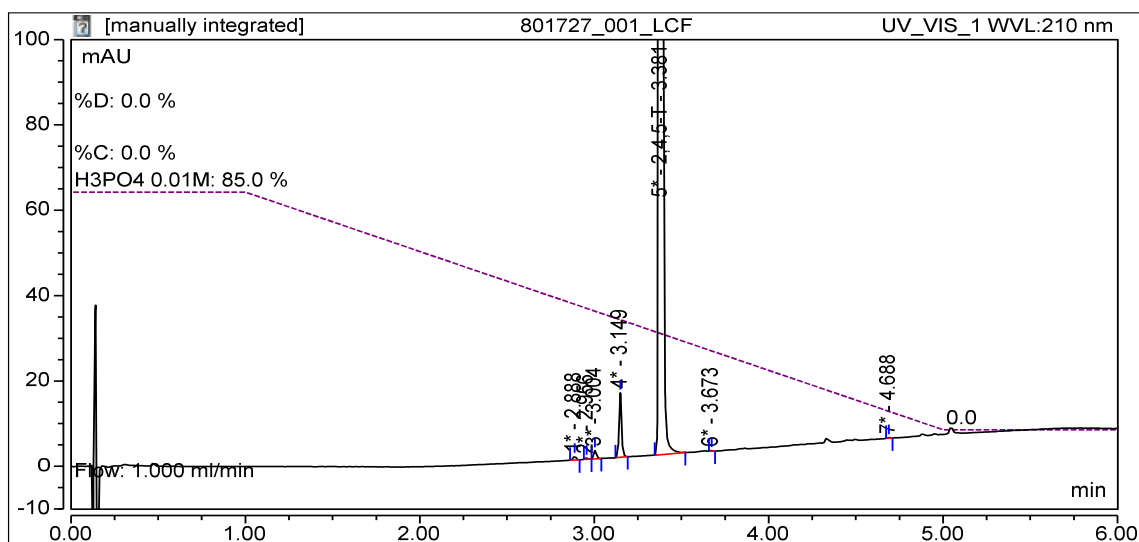


Figure 1: Zoomed Chromatogram

No.	Ret.Time min	Peak Name	Area mAU*min	Height mAU	Amount	Rel.Area %
1	2.888		0.01635	0.91805	n.a.	0.10
2	2.956		0.00502	0.31817	n.a.	0.03
3	3.004		0.03333	1.93678	n.a.	0.20
4	3.149		0.25282	15.15599	n.a.	1.53
5	3.381	2,4,5-T	16.25027	973.99452	n.a.	98.10
6	3.673		0.00319	0.18770	n.a.	0.02
7	4.688		0.00372	0.20890	n.a.	0.02
Total:			16.56469	992.72011		100.00

Table 1: Integration

